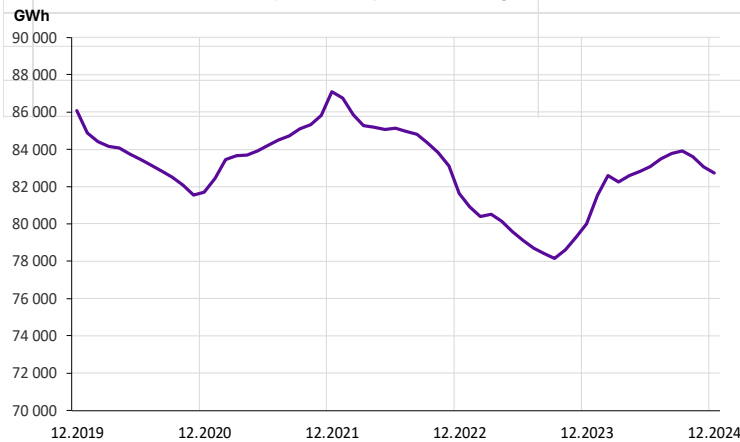
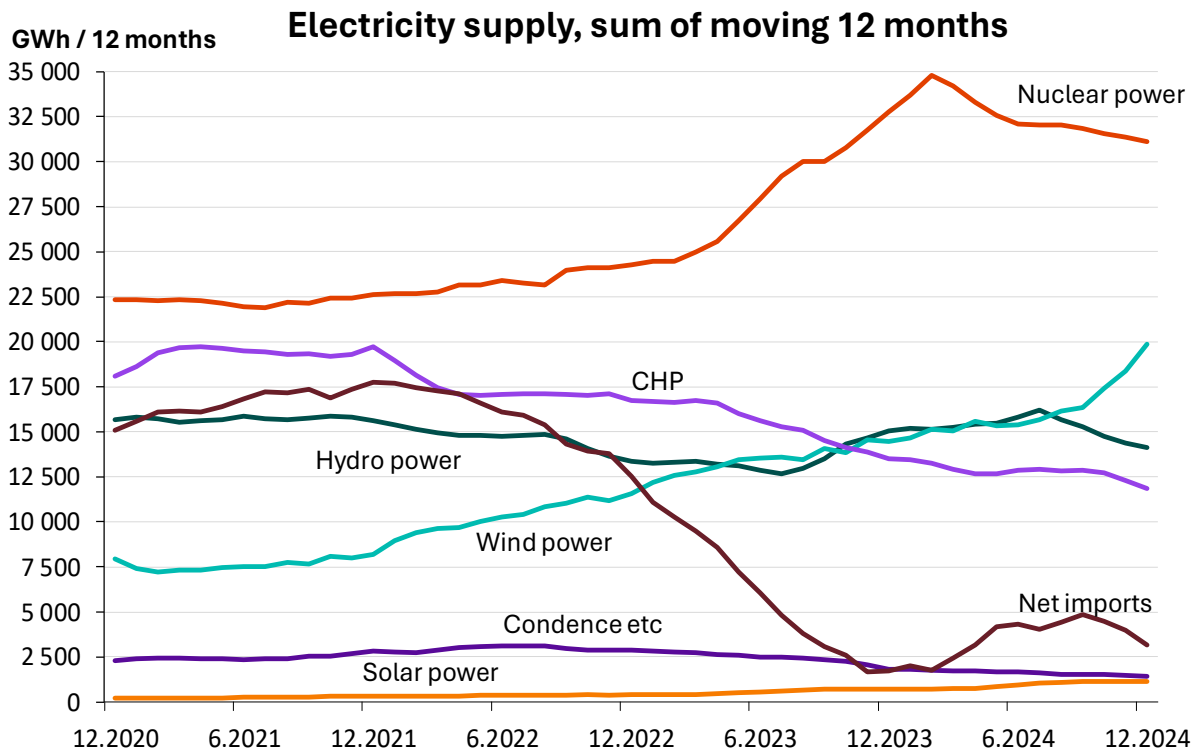


## MONTHLY ELECTRICITY SUPPLY IN FINLAND December 2024

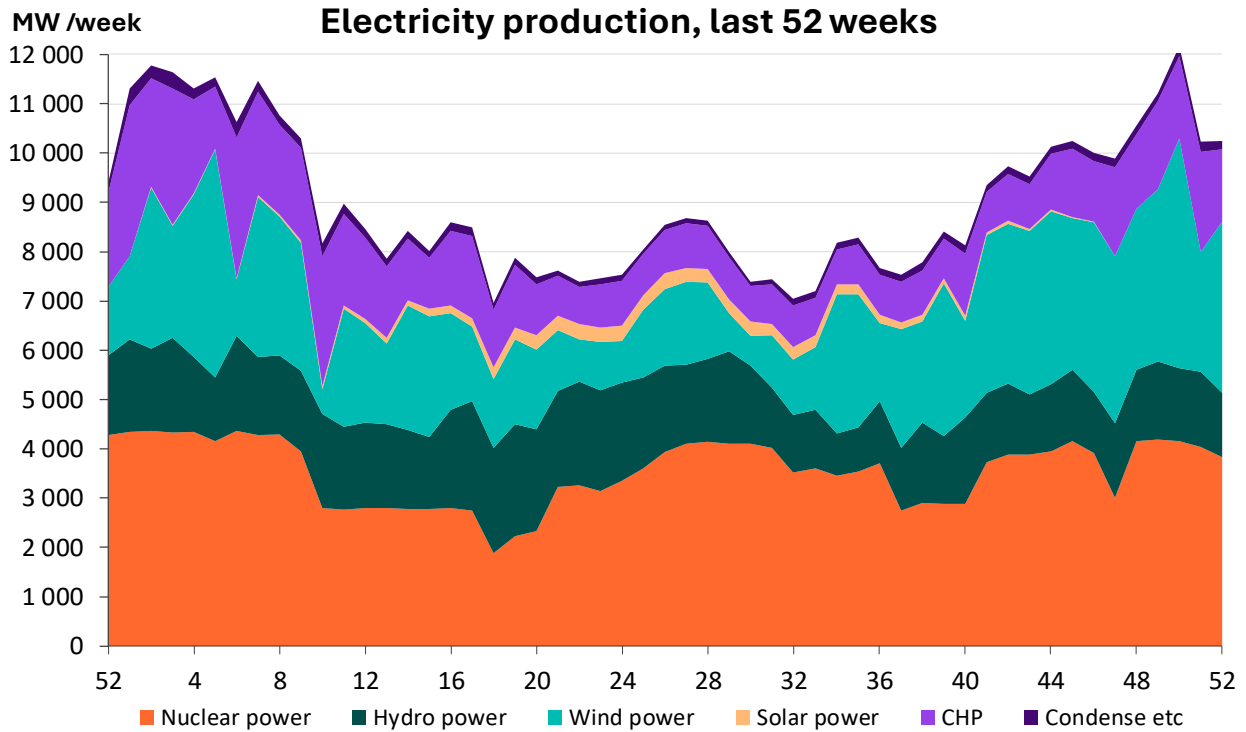
Consumption and the changes against last year		GWh	%
Electricity consumption, moving 12 months			
December		8079	-3,9
Cumulative		82738	3,4
Last 12 months		82738	3,4



	2023			2024		
	GWh	Share-%	Change-%	GWh	Share-%	Change-%
<b>December</b>						
<b>CONSUMPTION</b>	8404	100,0	9,4	8079	100,0	-3,9
<b>PRODUCTION</b>	7699	91,6	9,4	8205	101,6	6,6
Hydro Power	1322	15,7	39,0	1078	13,3	-18,5
Wind Power	1249	14,9	-6,9	2730	33,8	118,5
Solar Power	2	0,0	72,5	3	0,0	44,3
Nuclear Power	3205	38,1	46,4	2998	37,1	-6,5
Other Thermal	1920	22,8	-24,8	1396	17,3	-27,3
CHP	1722	20,5	-18,0	1259	15,6	-26,9
Separate	197	2,3	-56,5	138	1,7	-30,3
<b>IMPORTS</b>	1206	14,4	6,4	653	8,1	-45,9
<b>EXPORTS</b>	501		2,2	778		55,4
<b>Cumulative</b>						
<b>CONSUMPTION</b>	80007	100,0	-2,0	82738	100,0	3,4
<b>PRODUCTION</b>	78283	97,8	13,3	79557	96,2	1,6
Hydro Power	15026	18,8	12,7	14147	17,1	-5,9
Wind Power	14465	18,1	25,1	19854	24,0	37,3
Solar Power	716	0,9	82,6	1155	1,5	61,2
Nuclear Power	32759	40,9	35,1	31133	37,6	-5,0
Other Thermal	15316	19,1	-21,8	13268	16,0	-13,4
CHP	13503	16,9	-19,3	11839	14,3	-12,3
Separate	1813	2,3	-36,6	1429	1,7	-21,2
<b>IMPORTS</b>	9644	12,1	-50,3	8716	10,5	-9,6
<b>EXPORTS</b>	7920		15,1	5535		-30,1
<b>Last 12 months</b>						
<b>CONSUMPTION</b>	80007	100,0	-2,0	82738	100,0	3,4
<b>PRODUCTION</b>	78283	97,8	13,3	79557	96,2	1,6
Hydro Power	15026	18,8	12,7	14147	17,1	-5,9
Wind Power	14465	18,1	25,1	19854	24,0	37,3
Solar Power	716	0,9	82,6	1155	1,4	61,2
Nuclear Power	32759	40,9	35,1	31133	37,6	-5,0
Other Thermal	15316	19,1	-21,8	13268	16,0	-13,4
CHP	13503	16,9	-19,3	11839	14,3	-12,3
Separate	1813	2,3	-36,6	1429	1,7	-21,2
<b>IMPORTS</b>	9644	12,1	-50,3	8716	10,5	-9,6
<b>EXPORTS</b>	7920		15,1	5535		-30,1

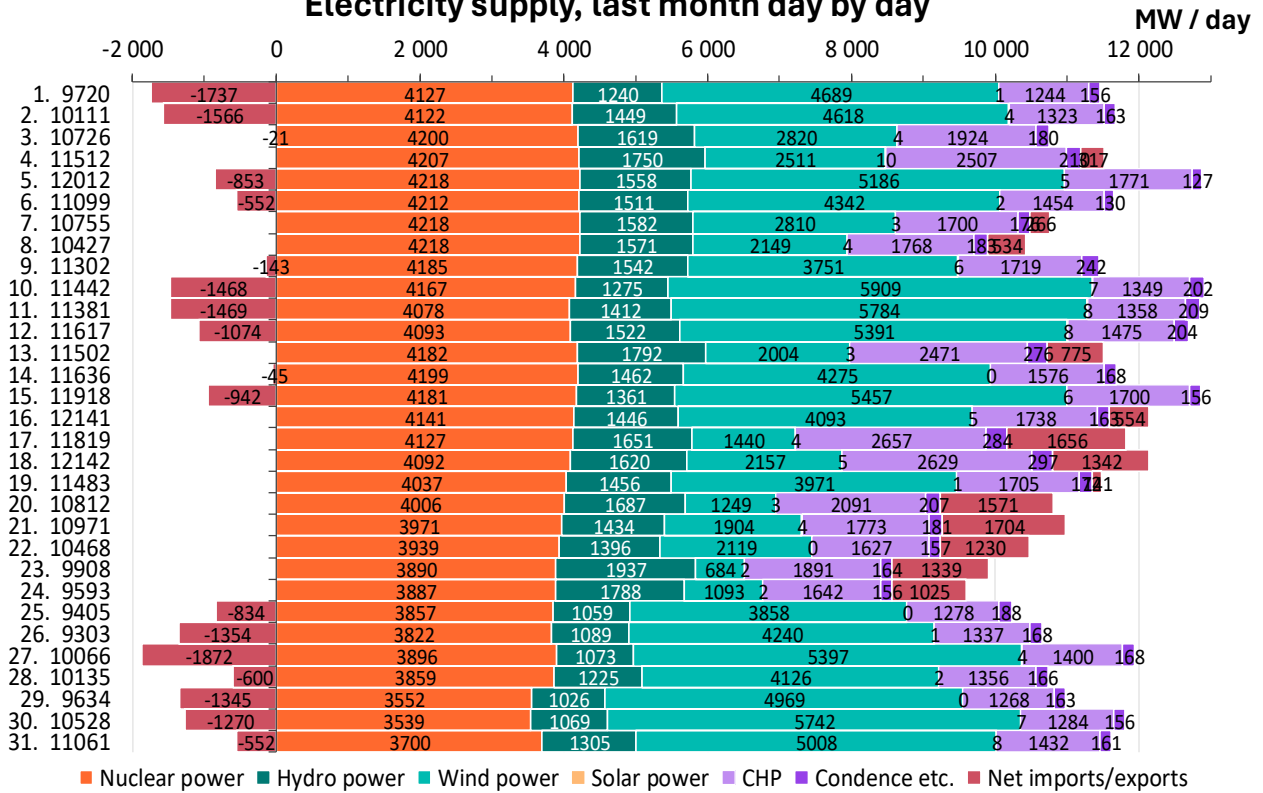


GWh	December		Cumulative		Last 12 months	
	2023	2024	2023	2024	2023	2024
<b>GROSS PRODUCTION</b>	7981	8442	80944	81990	80944	81990
Used in power plants	282	237	2662	2434	2662	2434
<b>PRODUCTION</b>	<b>7699</b>	<b>8205</b>	<b>78283</b>	<b>79557</b>	<b>78283</b>	<b>79557</b>
Hydro Power	1322	1078	15026	14147	15026	14147
Wind Power	1249	2730	14465	19854	14465	19854
Solar Power	2	3	716	1155	716	1155
Nuclear Power	3205	2998	32759	31133	32759	31133
Other Thermal	1920	1396	15316	13268	15316	13268
CHP	1722	1259	13503	11839	13503	11839
Industry	748	641	6899	6549	6899	6549
District Heating	974	618	6604	5290	6604	5290
Separate	197	138	1813	1429	1813	1429
<b>IMPORTS from</b>	<b>1206</b>	<b>653</b>	<b>9644</b>	<b>8716</b>	<b>9644</b>	<b>8716</b>
Sweden	1167	627	9220	8181	9220	8181
Estonia	9	2	45	278	45	278
Norway	30	24	379	257	379	257
Russia	0	0	0	0	0	0
<b>SUPPLY</b>	<b>8905</b>	<b>8858</b>	<b>87927</b>	<b>88272</b>	<b>87927</b>	<b>88272</b>
<b>EXPORTS to</b>	<b>501</b>	<b>778</b>	<b>7920</b>	<b>5535</b>	<b>7920</b>	<b>5535</b>
Sweden	40	256	887	1595	887	1595
Estonia	457	516	7018	3909	7018	3909
Norway	4	6	15	31	15	31
Russia	0	0	0	0	0	0
<b>CONSUMPTION</b>	<b>8404</b>	<b>8079</b>	<b>80007</b>	<b>82738</b>	<b>80007</b>	<b>82738</b>



GWh	Week number					
	47	48	49	50	51	52
<b>GROSS PRODUCTION</b>	1708	1826	1940	2099	1777	1770
Used in power plants	46	53	55	55	57	49
<b>PRODUCTION</b>	<b>1661</b>	<b>1773</b>	<b>1884</b>	<b>2044</b>	<b>1719</b>	<b>1720</b>
Hydro Power	254	241	265	249	257	221
Wind Power	569	550	586	782	406	585
Solar Power	2	1	1	1	1	0
Nuclear Power	504	700	706	698	680	642
Other Thermal	332	283	327	315	376	272
CHP	304	254	299	280	341	244
Industry	123	126	136	146	158	141
District Heating	181	129	162	133	184	103
Condense etc	29	29	28	35	35	28
<b>IMPORTS from</b>	<b>181</b>	<b>142</b>	<b>146</b>	<b>87</b>	<b>292</b>	<b>114</b>
Sweden	171	135	137	80	286	111
Estonia	4	0	1	0	1	0
Norway	5	6	9	6	5	3
Russia	0	0	0	0	0	0
<b>SUPPLY</b>	<b>1842</b>	<b>1915</b>	<b>2031</b>	<b>2131</b>	<b>2011</b>	<b>1835</b>
<b>EXPORTS to</b>	<b>109</b>	<b>224</b>	<b>191</b>	<b>191</b>	<b>95</b>	<b>202</b>
Sweden	13	65	34	53	5	106
Estonia	95	159	156	138	88	95
Norway	2	1	1	1	2	1
Russia	0	0	0	0	0	0
<b>CONSUMPTION</b>	<b>1733</b>	<b>1691</b>	<b>1840</b>	<b>1939</b>	<b>1916</b>	<b>1633</b>

### Electricity supply, last month day by day



### Electricity supply, monthly peak load day 15.12.

